

AGRIBUSINESS INDUSTRY

FOOD SAFETY & TRACEABILITY: From Farm To Table

Agribusiness, supply chains are more complex and challenging for the delivery of safe and nutritious food, it involves the active streamlining of commercial and supply-side activities, including: market plannings, trading activities, packaging and distribution operations while industry have been hindered by obstacles such as carrier selection, equipment availability and maintenance issues, advanced trucking, labor shortages, and bottlenecking congestions at shipping terminals.

Skylink network can handle nearly everything for agribusiness sector i.e., agricultural produce, such as cashews, cocoa, coffee, rice and soy, requires meticulous care throughout its journey to preserve freshness, taste, texture and aroma to fertilizers, crop protection chemicals, feed ingredients for livestock and farm equipment parts – we are linking farmers, food processors and shelf stockers.

Our long-standing customer relationships in the industry are built on best-in-class performance and perfect supply chain solutions, so that your perishable products are always ready for safe handlings, stow and a decade of transport experience for a range of dry and food-grade cargo to keep it in perfect condition throughout its entire journey by using the ideal transport systems.

Specialized Services:

- Shipping Operations – FF, NVO & Port Agency
- Direct Delivery Options – Farmer To Consumer
- Container Solutions – Reefer, Dry & Flexitank
- Consolidation Services
- Combined Transport
- Individual, Inner & Outer Packaging
- Temperature Controlled Handlings
- Perishable Goods Handlings
- Experience Shipping – Perishables, Temperature Controlled, Chemicals
- Value Added Services Related To SCM

Types of services:

- Warehousing And Storage
- Documentation & Compliance Support
- Contract Rates Fillings

Searching for Solutions:

Feel Free To Ask Your Queries To One of Our Marine, Forwarding & Trade Divisions!

Maritime Operations Department: mto@skylinkdistribution.com
Sales Operations Department: ops@skylinkdistribution.com
Trade Operations Department: tra@skylinkdistribution.com



FROZEN FOOD

Freezing allows you to preserve food for longer periods of time and minimize the risk of food poisoning by reducing the number of harmful microbes; keeping food frozen is just as important, especially when it needs to be transported to different destinations. Frozen foods can be expensive to produce and distribute— be sure not to lose any freight due to poor transportation.

Skylink network provides reliable, cost-efficient shipping services for prepared & processed food & beverages being shipped throughout the World. Regulations and customs active in the food & beverage industry are complicated and subject to changes affecting the costs and process of shipping products internationally.

Skylink understands that each country has its own regulations, rules, and customs regarding the international shipping of frozen food. We help you navigate the complicated and ever-changing parameters regarding the transportation of frozen food and we can manage the custom clearance procedure for you.

Skylink provides professional and cost-effective logistics services for the FMCG industry, ensuring swift movement of high-volume goods and effective management of manufacturers and suppliers along the supply chains. The priority of our competitive frozen food logistic solutions is to get your products to the market in perfect condition, with cost-efficiency and speed.

Specialized Services:

- Frozen From Start To Finish
- Temperatures Of Up To -25°C
- Monitored Temperature Control
- Premium Logistics Company
- Expedited, Sample And High-Volume Shipment Capabilities
- New Product Introduction Support
- Truckload Brokerage
- Temperature-Controlled Facilities
- Packaging, Re-Packing, Kitting And Labeling
- Merge-In-Transit Capabilities

Types of Services:

- Consultative Services
- Fulfillment Services
- International Documentation Support

Searching for Solutions:

Feel Free To Ask Your Queries To One of Our Marine, Forwarding & Trade Divisions!

Maritime Operations Department: mto@skylinkdistribution.com

Sales Operations Department: ops@skylinkdistribution.com

Trade Operations Department: tra@skylinkdistribution.com

AUTOMOTIVE INDUSTRY

DELIVERING EFFICIENCY, DRIVING SUCCESS

Automotive industry face tremendous challenges (and transportation management of pre-assembled and aftermarket automotive components has specialized requirements) for the efficient delivery of parts & finished vehicles to its users, while volatile consumption demand, urgent part maintenance and after-sales issues are vital parts of the automotive industry's logistics work.

Skylink network provides the cost-effective flow of components from numerous suppliers in various countries to ensure a smooth manufacturing, assembly and delivery process, no matter – if you're an original equipment manufacturer, car suppliers, automobile manufacturers, importers or a distributor of tyres, tubes or batteries, you can rely on our resources, expertise and willingness to innovate in partnership with you.

Our worldwide, end-to-end supply chain solutions include inbound procurement, production logistics, service parts distribution, and reverse logistics services. Skylink network keeps your supply chain operations efficient and on time using real-time technology, combining agile processes and industry expertise to service customers in all automobility sectors.

Specialized Services:

Our expertise in regional and international transportation, able us to offer a wide variety of services, covering all the needs that this industry require:

- Global Trade Compliance
- PO Management
- Contract Management
- Global Air And Ocean Management
- Container Management
- Aftermarket Warehousing & Distribution
- Transport RORO
- Port Handlings
- Return Management
- Fairs & Events Logistics
- Cross-Dock Operations
- Vendor Supplier Management
- Carrier Car & Truck Transportation For CBU

Types of services:

- RORO Handlings
- Pre Inspection Services - Dispatch & Delivery
- Customs Clearance Services

Searching for Solutions:

Feel Free To Ask Your Queries To One of Our Marine, Forwarding & Trade Divisions!

Maritime Operations Department: mto@skylinkdistribution.com
Sales Operations Department: ops@skylinkdistribution.com
Trade Operations Department: tra@skylinkdistribution.com

Specialized Services:

- Temperature-Controlled Facilities
- Raw Materials Management
- Finished Goods And Supplies
- Material Supplier Management
- Battery Sourcing Analysis
- Battery Cells Transportation
- Transportation Syncing
- Consignment Solutions
- Secure Transportation
- Multi Sourcing Transportation Management

Types of Services:

- Vendor-Managed Inventory (VMI)
- Reverse Logistics
- Documentation Management

Searching for Solutions:

Feel Free To Ask Your Queries To One of Our Marine, Forwarding & Trade Divisions!

Maritime Operations Department: mto@skylinkdistribution.com
Sales Operations Department: ops@skylinkdistribution.com
Trade Operations Department: tra@skylinkdistribution.com

BATTERY MANUFACTURING

DELIVERING ENERGY FOR A SUSTAINABLE FUTURE

The future is bright for those who keep up with it. It happens to be true in the case of battery logistics too because batteries are the main drivers of the ongoing electrification of the world, which rapidly increases the need for reliable solutions. Whether it is for electronic devices, electric vehicles, or renewable energy storage, the need for safe and efficient battery shipping solutions is essential. However, the logistics for transport, return, and recycling are complex due to their dangerous-goods classification.

Skylink network understands the importance of safe battery shipping. We have the necessary experience, expertise, and resources to ensure that all battery shipments are transported in compliance with international regulations with proper packaging and labelling as per standards.

Skylink network's team of professionals is trained to handle all types of batteries, including lithium-ion batteries, which are commonly used in electronic devices, electric vehicles, and renewable energy storage systems. We provide end-to-end logistics solutions for battery shipping, including transportation, customs clearance, and warehousing services.

Specialized Services:

- Determine The Product Flow and Seasonal Demand.
- Omnichannel & Multichannel logistics
- Quality Controls in Incoming and Outgoing Goods (e.g. quality control, first sample comparisons, packaging control)
- Distribution Logistics
- Inventory Management in Different Distribution Channel
- Returns Processing
- Display Management
- Organize Local and International Shipping.
- Product-Specific Packaging Solutions (e.g. foiling, engraving) and Packaging recycling
- Value Added Service Related to SCM

Types of Services:

- Contract Logistics
- Return Management
- Consultation Services

Searching for Solutions:

Feel Free To Ask Your Queries To One of Our Marine, Forwarding & Trade Divisions!

Maritime Operations Department: mto@skylinkdistribution.com

Sales Operations Department: ops@skylinkdistribution.com

Trade Operations Department: tra@skylinkdistribution.com

BEAUTY & COSMETICS INDUSTRY

SECURE BEAUTY LOGISTICS: Minimizing Industry Challenges

In the cosmetics industry, efficient logistics & supply chains play a vital role and an effective logistic system provides a competitive advantage and fulfills the retailer's demand. The Cosmetics Industry required well established and wide logistics system from gathering raw material to finished products, this includes air, sea, road, and rail freight, custom clearance, taxes, management of logistics platforms, packaging, picking, and reverse logistics.

Skylink brings your beauty products to your retailer or end customer by the fastest route. Our experienced freight forwarders, trained employees, agile returns management & seamless Skylink quality controls guarantee that your goods arrive safely.

Skylink supports customers in developing products and supply chain models that meet growing consumer demands and high expectations for brand experience. We offer a broad portfolio of high-quality beauty & cosmetic supply chain services, from omnichannel fulfillment to co-packing solutions and specific transport services

CHEMICAL INDUSTRY

DRIVING INNOVATION, POWERING PROGRESS: Chemicals on the move

Industries such as chemical manufacturing and its downstream processing require special transport conduct, equipment, environmental and safety restrictions - subject to carrier's conditions for acceptance, documentations, liability issues, and over the road weight limitations - additionally, the chemical materials and products are under constant regulatory watch.

Skylink network specialized in efficient forwarding of UN regulated goods-complying with IMDG Code & DGR contain guidelines, classifications, mark, pack, label and document for the acceptance of dangerous shipments and hazardous materials by Air, Sea, Inland & ISO tanks partnerships. Our trained staff is always ready to find methods to reduce carbon footprints while also removing waste, cutting costs, and increasing operational efficiency.

Skylink network understands; how to prepare shipping papers; chemical compatibility issues, segregate hazard classes, labeling, packaging and placarding requirements, vehicle operation requirements; emergency response and changing regulations across different geographies.

With our in-depth knowledge of the chemical logistics environment, we offer comprehensive transport solutions for the chemical industry. Skylink network stays abreast of the laws governing the transport of hazardous materials so our understanding of the particular challenges faced by this industry is second to none.

Specialized Services:

- Specialized And Dedicated Chemical Packaging Equipment
- Flexible Packaging Options
- Bulk Loading Into Containers
- Hazardous Material Handling
- Cost Effective Logistic Solutions
- Compliance with Regulations
- Emergency Response Planning
- Custom Clearance Support
- Warehousing and Storage
- End-To-End Visibility To Consumers

Types of services:

- Customizable Logistics Solutions
- Integrated Logistics
- Equipment And Container Selection

Searching for Solutions:

Feel Free To Ask Your Queries To One of Our Marine, Forwarding & Trade Divisions!

Maritime Operations Department: mto@skylinkdistribution.com
Sales Operations Department: ops@skylinkdistribution.com
Trade Operations Department: tra@skylinkdistribution.com

ELECTRONIC AND ELECTRICAL

EMPOWERING LOGISTICS WITH ELECTRONIC TRANSPORTATION

As globalization increases, the electronics industry faces greater time and cost pressures. Electronics products are often the rock stars of the consumer & business products worlds, with buyers eagerly anticipating the next release with the latest and greatest features. The electronics industry is notoriously segregated, with multiple players involved in the supply chain, not all of which are marching to a common beat.

Skylink network integrate experienced supply chain management and industrial expertise to provide Global Reach to the customers and offer Local Touch solutions to assist you to enhance product value chain, optimize logistics process & explore new markets. Skylink understands that electronic components are an integral and crucial part of every global production network. In this age of complex supply chains, the availability of the necessary components at the right time, in the required quantity, and in perfect quality is absolutely essential.

Skylink network provides one-stop support for complex sales and distribution supply chains, from procurement, distribution & component purchasing that transcends national borders through to user delivery. We truly understand your business and deeply comprehend your customer demand to provide consumer electronic logistics solutions exceeding your expectation.

Specialized Services:

- Component Suppliers
- Contract Manufacturers
- Contract Joint Ventures
- Original Equipment Manufacturers/ Brand Owners
- Distributors/Partners/Value-Added Resellers
- Reverse Logistics Service
- First Expired First Out (FEFO)
- Last In First Out (LIFO)
- First In First Out (FIFO)
- Configuration/Customization, Repairs
And Quality Inspection

Types of Services:

- Vendor Management
- Custom Clearance
- Packaging And Labelling

Searching for Solutions:

Feel Free To Ask Your Queries To One of Our Marine,
Forwarding & Trade Divisions!

Maritime Operations Department: mto@skylinkdistribution.com
Sales Operations Department: ops@skylinkdistribution.com
Trade Operations Department: tra@skylinkdistribution.com

ELEVATORS & CONVEYORS INDUSTRY

ELEVATOR LOGISTICS: Beyond Boundaries, Above Expectations

Delivering elevators and conveyors poses several logistical challenges that require meticulous planning and coordination. The size and weight of these specialized equipment often demand specialized transportation, with considerations for road restrictions, permits, and escort vehicles. Coordinating the delivery schedule with the availability of suitable transportation and ensuring compliance with local regulations can be a complex task.

Skylink are at hand to deliver your elevator cargo and provide loading and unloading expertise. We also connected with trusted and certified machinery engineers who will assemble your elevator equipment on site. Our dispatch managers for elevator transport will obtain your route plans to arrange for escorts or pilot car services.

Skylink efficient communication & collaboration among manufacturers, transporters, & installation teams optimized the transportation services. Our team offers just in time deliveries to their customers as our worldwide, end-to-end supply chain solutions include inbound procurement, production logistics, service parts distribution, and reverse logistics services.

Specialized Services:

- Freight Forwarding
- Project Cargo Management
- Installation Logistics
- Route Planning & surveys
- Supply Chain Visibility Platform
- Last Mile delivery Solutions
- Collaborative Platform For Stakeholders
- Packing & Crating
- Warehousing & storage Facility
- Value Added Services Related to SCM

Types of Services:

- Regulatory Compliance Support
- Documentation
- Contract Management

Searching for Solutions:

Feel Free To Ask Your Queries To One of Our Marine, Forwarding & Trade Divisions!

Maritime Operations Department: mto@skylinkdistribution.com

Sales Operations Department: ops@skylinkdistribution.com

Trade Operations Department: tra@skylinkdistribution.com

TEXTILE INDUSTRY

TEXTILE LOGISTICS: Textile Finishing

You want a logistics supplier who can give the proper solutions and enhance your supply chain strategy because the consumer and retail business are cutthroat and quick-paced.

Skylink offers a full range of consumer and retail services, and our areas of specialization serve clients in the fashion, sport, and footwear, cosmetics and personal care, luxury goods, publishing, home equipment and furnishings, home goods, technology, and eCommerce industries.

Skylink manages the professional handling of these high demand and fashion-oriented products – both in storage and in transit.

Specialized Services:

- Garments On Hangers
- Protective Packaging And Package Solutions
- Product Personalization & Customization
- Peak Volume Sales Support And Peak Volume Specialist
- Point Of Consumption Locations
- Unassisted Deliveries & Stock Scanning At Location
- Value Added In Store Activities
- Dedicated And Hybrid Vehicle Solutions
- Central Control And Network Monitoring Through The Control Tower
- Driver Excellence Program For Telematics Performance

Types of services:

- Just In Time Delivery And Unassisted Nighttime Deliveries
- Part And Full Load Delivery Capability
- Real Time Information Updates

Searching for Solutions:

Feel Free To Ask Your Queries To One of Our Marine, Forwarding & Trade Divisions!

Maritime Operations Department: mto@skylinkdistribution.com
Sales Operations Department: ops@skylinkdistribution.com
Trade Operations Department: tra@skylinkdistribution.com

Specialized Services:

- Global Freight Management
- Installation Logistics
- Regulatory Compliance & Assistance
- Emergency response logistics
- Supply Chain Visibility Platform
- Last Mile delivery Solutions
- Packing & Crating
- Warehousing & storage Facility
- Supply Chain Consulting
- Value Added Services Related to SCM

Types of Services:

- Import/ Export Custom
- Documentation
- Contract Management

Searching for Solutions:

Feel Free To Ask Your Queries To One of Our Marine, Forwarding & Trade Divisions!

Maritime Operations Department: mto@skylinkdistribution.com

Sales Operations Department: ops@skylinkdistribution.com

Trade Operations Department: tra@skylinkdistribution.com

FIRE PROTECTION INDUSTRY

PYRO-PROTECT LOGISTICS: Ensuring Timely Delivery

Fire protection equipment contains chemicals at very high pressure. Transporting them involves moving slowly and cushioning the extinguishers so there is no risk of explosion or accidentally activating the trigger mechanism. If shipping firm transporting fire protection equipment then it need to declared them as a dangerous goods because of their desperate property. And also it require careful planning to remove all the risk associated with these type of transportation.

Skylink affiliated with fire department, safety inspectors, environmental agencies, and emergency response team to minimize involved risk from entire shipping operation.

Skylink also underpin with experience team who are available 25/7 to assist you and to offer best possible solutions for your shipment.

Specialized Services:

- Cross-Docking
- Modern Trade / General Trade
- Home / Last-Mile Delivery
- Event Logistics
- Reverse Logistics
- High-Accuracy Sorting And Picking Process
- Repacking Services For Fast Market Responses And Sales Deadlines
- Inventory Control To Ensure Stock Supply To Sales Ends
- Integration With Customer System To Provide Real-Time Inventory Visibility
- Finished / Raw Material Management

Types of Services:

- Real-Time Tracking Of Shipments
- Delivery Of Orders To Customers' Distributors, Chain Stores, Or Other Retail Sales Points
- Multi-Stop Routes (Milk Runs).

Searching for Solutions:

Feel Free To Ask Your Queries To One of Our Marine, Forwarding & Trade Divisions!

Maritime Operations Department: mto@skylinkdistribution.com

Sales Operations Department: ops@skylinkdistribution.com

Trade Operations Department: tra@skylinkdistribution.com

FAST-MOVING CONSUMER GOODS (FMCG) INDUSTRY

MOVING FMCG FASTER, BETTER, AND SAFER - EVERY TIME

FMCG logistics or perishable logistics is the fast-moving consumer goods (FMCG) that need transporting quickly. They are products that sell quickly & cost-effectively. These goods are also called consumer packaged goods. FMCG products have a short shelf life because of high consumer demand. FMCG logistics management is essential for efficient transportation of goods from one location to another, including food and beverages, cosmetics, cleaning and personal hygiene products, over-the-counter medicines, office material, and other consumables.

Available around the clock: Skylink network delivers fast-moving consumer goods (FMCG) on time to the point of sale for retailers and manufacturers. We know the industry and understand what is most important – we have worked with customers dealing in food and drink, home cleaning products, personal care and cosmetic items for years.

Skylink Network offers professional & affordable logistics services to the FMCG sector, in order to ensure quick transportation of large volumes of goods & efficient management of manufacturers and suppliers throughout supply chains. Our priority for FMCG logistic solutions is to get your products to the market in perfect condition, with cost-efficiency and speed.

Specialized Services:

- GDP-Compliant, Temperature-Controlled Air Freight Solutions
- GDP-Compliant, Temperature-Controlled Ocean Freight Solutions
- GDP-Compliant, Temperature-Controlled Road Freight Solutions, Including Final Mile
- GDP-Licensed Contract Logistics Solutions
- Real-Time Supply Chain Visibility (Temperature And GPS) Solution
- End-To-End Route Risk Assessments
- Flexible And Customizable Logistics Solutions
- Globally Standardized GDP Quality Management
- Active, Passive Cold Chain Packing Options
- Temperature Controlled Options Available

Types of Services:

- Air Freight Packaging Expertise/Advice
- Ocean Freight (De)Consolidation Hub
- Custom Clearance

Searching for Solutions:

Feel Free To Ask Your Queries To One of Our Marine, Forwarding & Trade Divisions!

Maritime Operations Department: mto@skylinkdistribution.com

Sales Operations Department: ops@skylinkdistribution.com

Trade Operations Department: tra@skylinkdistribution.com

HEALTHCARE INDUSTRY

BUSINESS GATEWAY: Delivering Satisfied Customers

Today's increasingly stringent healthcare regulations, and the growing outsourcing and globalization of production, require even greater flexibility from supply chains in the healthcare sector in order to optimize costs. Whether it's a matter of quickly switching from one supply source to another, speeding up the availability of products in the event of shortages or even stopping a distribution process when a product is withdrawn from the market, healthcare supply chains must be able to constantly adapt.

Skylink manages the complete supply-chain of your healthcare products in a patient-focus approach ensuring security and integrity of the product in complete compliance with regulations, while keeping focus on transit-time and proposing alternatives to optimize costs. We build smart, turnkey networks equipped to support time-critical and emergency deliveries and led by round-the-clock specialist teams.

Skylink responds to the unique needs of healthcare supply chains with critical fulfilment and inventory-management healthcare logistics for hospital supplies, medical devices and pharmaceuticals. Our dedicated healthcare teams rely on their extensive medical & healthcare industry experience in the sector for insight into current and future healthcare supply chain challenges and developments.

PHARMACEUTICALS

EFFICIENT DELIVERY FOR BETTER HEALTH OUTCOMES

A meticulous problem in transporting medications is because it includes significant amount of cold chain logistics. Pharma shipments provide several logistical challenges pertaining to quality, safety and promptness in delivery. Regulatory requirements, cost considerations, fast response to global emergencies; the pharmaceutical industry constantly demands more expertise and greater capabilities to get life-saving products to the people who need them quickly and safely, and with complete visibility and quality assurance along the way.

Skylink offers provides customized logistics services and solutions for pharmaceuticals products. Most pharmaceuticals, require temperature controls in place to ensure the integrity of the goods while in transit. We understand these requirements and once they are provided by the client, we work to meet those established standard operating procedures, such as pharma cold chain transportation.

At Skylink, our pharma experts handle all import / export customs declarations, compliance verification, verification audit assistance, anti-dumping, free trade agreement, OGD (Other Government Dept) information / requirements and GST information.

Specialized Services:

- Integrating Air, Sea, Road And Rail
- Online Cargo Tracking
- Door-to-door & Priority Services
- Specializing In Chemical And Dangerous Goods
- Temperature Controlled Options Available
- Preparation Of Legal Documentation
- Delivery With Full Compliance
- Enhanced Traceability In Logistics
- Temperature Controlled Logistics
- Value Added Services In Accordance To SCM

Types of Services:

- Reverse Logistics For Expired Products
- Import / Export Customs Declarations
- Forms, Documentation & Labelling Requirements

Searching for Solutions:

Feel Free To Ask Your Queries To One of Our Marine, Forwarding & Trade Divisions!

Maritime Operations Department: mto@skylinkdistribution.com

Sales Operations Department: ops@skylinkdistribution.com

Trade Operations Department: tra@skylinkdistribution.com

INDUSTRIAL AUTOMATION & CONTROL

DELIVERING AUTOMATION INDUSTRY: Enhancing Logistics Solutions

In industrial automation and control logistics demand meticulous timing, specialist handling, & smooth integration within complicated supply chains. Components must be transported with extreme caution to avoid damage due to their fragile nature and susceptibility to environmental conditions.

Skylink with close collaboration with engineers, installation team, machinery operators and inspection firm, ensuring smooth flow of your automation equipment till final stretch.

Our team with extensive insight in shipping machinery goods with special care and strategic handling techniques, assuring you that Skylink will facilitate every aspects of your shipment such as custom, finance, compliance, import/ export regulatory requirement, shipping and logistics.

Feel Free To Ask Your Queries To One of Our Marine,
Forwarding & Trade Divisions!

Maritime Operations Department: mto@skylinkdistribution.com
Sales Operations Department: ops@skylinkdistribution.com
Trade Operations Department: tra@skylinkdistribution.com

Specialized Services:

- Global Freight Management
- Installation Logistics
- Supply Chain Visibility Platform
- Last Mile delivery Solutions
- Packing & Crating
- Warehousing & storage Facility
- Supply Chain Consulting
- Reverse Logistics
- Customer Support and Service
- Value Added Services Related to SCM

Types of Services:

- Import/ Export Custom
- Documentation
- Contract Management

Searching for Solutions:

Feel Free To Ask Your Queries To One of Our Marine,
Forwarding & Trade Divisions!

Maritime Operations Department: mto@skylinkdistribution.com
Sales Operations Department: ops@skylinkdistribution.com
Trade Operations Department: tra@skylinkdistribution.com

MARBLE INDUSTRY

Since almost 5,000 years ago, marble has been used in architectural masterpieces, from the palaces & sanctuaries of ancient Greece to the majestic staircases and imposing ballrooms of today. Due to its extensive use around the globe, care must be taken not only during its extraction but also during its transit because improper movement can jeopardize the material's integrity and delivery time.

Skylink network provides the best specialized transportation services for marble thanks to our team of experts, who have in-depth knowledge of commodities in both the country of origin and the country of arrival. From managing pottery, restroom, and related accessories, to transporting the most delicate materials like slabs and machine completed items, we have devoted ourselves to refining the process of exporting tile and marble.

Skylink network is pleased to share that we provide full-service logistics solutions for the marble industry. Marble can be challenging to move around, but with the right tools and procedures, the product can be transported without being damaged.

Specialized Services:

- Logistics Solutions For Marble
- Storage And Distribution
- Door-to-door Delivery
- Shipments Of Materials And Equipment Necessary For The Processing And Treatment Of Marble
- Transportation Of Heavy Loads Of Marble
- Supply Chain Planning
- Over-dimensional Cargo (ODC)
- Logistics Liability Insurance Coverage
- Stock Management
- Cross Docking

Types of Services:

- Vendor Management
- Custom Clearance
- Documentation

Searching for Solutions:

Feel Free To Ask Your Queries To One of Our Marine, Forwarding & Trade Divisions!

Maritime Operations Department: mto@skylinkdistribution.com
Sales Operations Department: ops@skylinkdistribution.com
Trade Operations Department: tra@skylinkdistribution.com

Specialized Services:

- Get Raw Materials Into Production On-Time
- Efficiently Manage Inventories & Warehousing
- Have Accurate Information And Visibility
- Ship Finished Products To Their Destinations On-Time
- Control Costs While Providing Great Customer Service
- IT Systems, Designed For Inventory Management And Reporting
- Cross-Border Logistics For Metal Transports
- Multifunctional Freight Wagons For All Types Of Metal Products
- Transportation For Out-Of-Gauge Consignments
- Container Loader For Coated Metal

Types of Services:

- Database For Metal And Steel Shippers
- Manage Inbound And Outbound Flows
- End-to-end Tracking

Searching for Solutions:

Feel Free To Ask Your Queries To One of Our Marine, Forwarding & Trade Divisions!

Maritime Operations Department: mto@skylinkdistribution.com
Sales Operations Department: ops@skylinkdistribution.com
Trade Operations Department: tra@skylinkdistribution.com

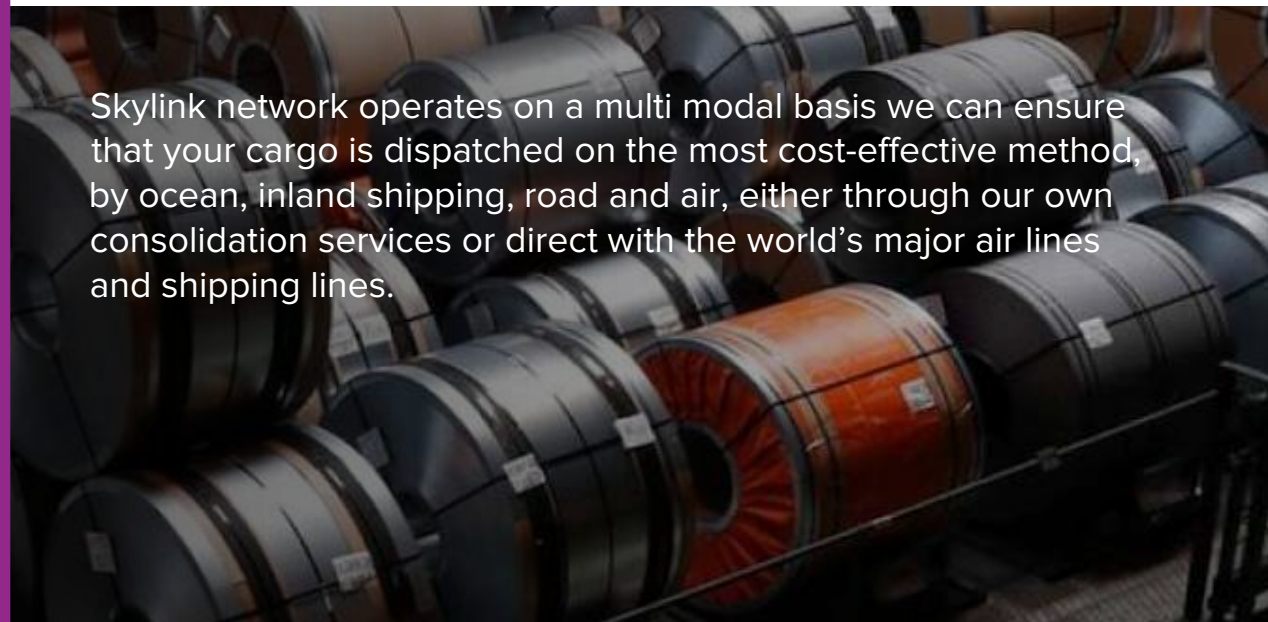
METAL INDUSTRY

INDUSTRIAL SUPPLIES & METALS DISTRIBUTOR

Metal comes in all different shapes and sizes, from finished products to plates. The products all have something in common; the weight is often very high. The metals industry faces many challenges, & large, bulky equipment and supplies require special handling and on-time delivery, often to remote areas. Shipping of specific materials and over-dimensional items require different transportation modes & customized vehicles, like flatbed trucks.

Skylink network understands the unique logistics challenges facing steel and material industries. We provide a wide range of solutions that help align ware-house & transportation operations with your business strategies. Effective logistics management is essential to ensure timely delivery of products and reduce costs associated with transportation and storage.

Skylink network operates on a multi modal basis we can ensure that your cargo is dispatched on the most cost-effective method, by ocean, inland shipping, road and air, either through our own consolidation services or direct with the world's major air lines and shipping lines.



PAINT INDUSTRY

EFFICIENT PAINT TRANSPORTATION FOR A VIBRANT WORLD

Paints are considered dangerous goods / hazardous materials. As with all dangerous goods, the packing and shipping of these products requires the right paperwork, packaging, labeling, and transport along with proper certifications.

Skylink network offers the best solutions in this critical domain. When it comes to the Paint Industry, the hazards and risks associated cannot be ignored. The product base has more than just the house paints and they are often perilous which requires an expertise in the domain. With the experience of several years, we are aware of every challenge and all the loops ignored while handling paint logistics & hence we ensure a smooth management of the supply chain and a safe delivery of these products.

Skylink network specializes in temperature-controlled HazMat shipments. We can ship these in your individual packaging on skids or bulk containers. Our fully trained dispatch team inspect cargo for proper securement.

Specialized Services:

- Specialized And Dedicated Chemical Packaging Equipment
- Flexible Packaging Options
- Bulk Loading Into Containers
- Hazardous Material Handling
- Cost Effective Logistic Solutions
- Compliance with Regulations
- Emergency Response Planning
- Custom Clearance Support
- Warehousing and Storage
- End-To-End Visibility To Consumers

Types of services:

- Customizable Logistics Solutions
- Integrated Logistics
- Equipment And Container Selection

Searching for Solutions:

Feel Free To Ask Your Queries To One of Our Marine, Forwarding & Trade Divisions!

Maritime Operations Department: mto@skylinkdistribution.com
Sales Operations Department: ops@skylinkdistribution.com
Trade Operations Department: tra@skylinkdistribution.com

Specialized Services:

- Maintain Real-time Visibility Over Shipments
- Identify And Contract Specialized Carriers At Short Notice
- Uncover Cost Opportunities Throughout The Paper And Packaging Supply Chain
- Handling Of Paper Rolls, Pallets And Bales,
- Warehouse Management
- Just In Time (JIT) Deliveries
- Documentation
- Order Management
- One-stop Shop For Customized Transport Paper Logistics
- Industry-specific Product Solutions

Types of Services:

- On-site Logistics
- Procurement Logistics
- Custom Clearance

Searching for Solutions:

Feel Free To Ask Your Queries To One of Our Marine, Forwarding & Trade Divisions!

Maritime Operations Department: mto@skylinkdistribution.com

Sales Operations Department: ops@skylinkdistribution.com

Trade Operations Department: tra@skylinkdistribution.com



PAPER AND PACKAGING INDUSTRY

STREAMLINING YOUR PAPER AND PACKAGING LOGISTICS

The paper and packaging industry is a critical input to manufacturing supply chains, requiring timely, dependable delivery of packaging to complete processes and package finished goods for deliveries. Customers of paper and packaging companies require high levels of on-time delivery & flexibility to respond to last minute requests.

Skylink network creates unique solutions for the paper & packaging industry as it is one of World's fast-growing sectors. This sector involves various types of transportation and storage of paper and packaging.

Skylink network have experienced staff and suitable equipment to meet these challenges; have supported major paper and packaging companies, & along the way, has helped them transform their supply chain to meet the new demands of the marketplace as we know that paper and packaging are sensitive products that require careful handling.

PETROLEUM INDUSTRY

SUSTAINABLE CHEMICAL SOLUTIONS FOR A BETTER TOMORROW

Products made from petrochemicals are ubiquitous & essential to contemporary society. There are numerous of them, such as plastics, fertilizers, packaging, apparel, digital gadgets, medical equipment, detergents, tires, and more. They may also be found in several components of the contemporary energy system, including as those for solar panels, wind turbine blades, batteries, building thermal insulation, and electric vehicle components.

Skylink Network has a long history of providing design and simulation solutions for petrochemical supply chain management. We can manage your supply chain operations, improve efficiency, and increase profitability with the help of these technologies, which cover the difficulties of sourcing raw materials, production, transportation, and delivery.

Skylink Network stands for the producers of the petrochemicals that are necessary components of contemporary living as well as the fuels that keep people moving..

Specialized Services:

- Management Of Inbound And Outgoing Transportation
- Skilled Container Handling
- Complete Inventory Transparency
- Supply, Production, And Material Flow Control
- Production, Packaging, And Schedule Shipping
- Forecasting To Prepare For Unexpected Changes In Production/ Shipping Schedule
- Traceability Of Batches, Lots, And Grades From Manufacturing To The Final Consumer
- Comprehensive Management Of Risky Commodities
- Decreasing Marine Terminal Demurrage Costs
- Controlling Shipping Operations

Types of Services:

- Purchasing And Expediting
- Safe Distribution And Warehousing
- Customs Clearance And Import-export Compliance

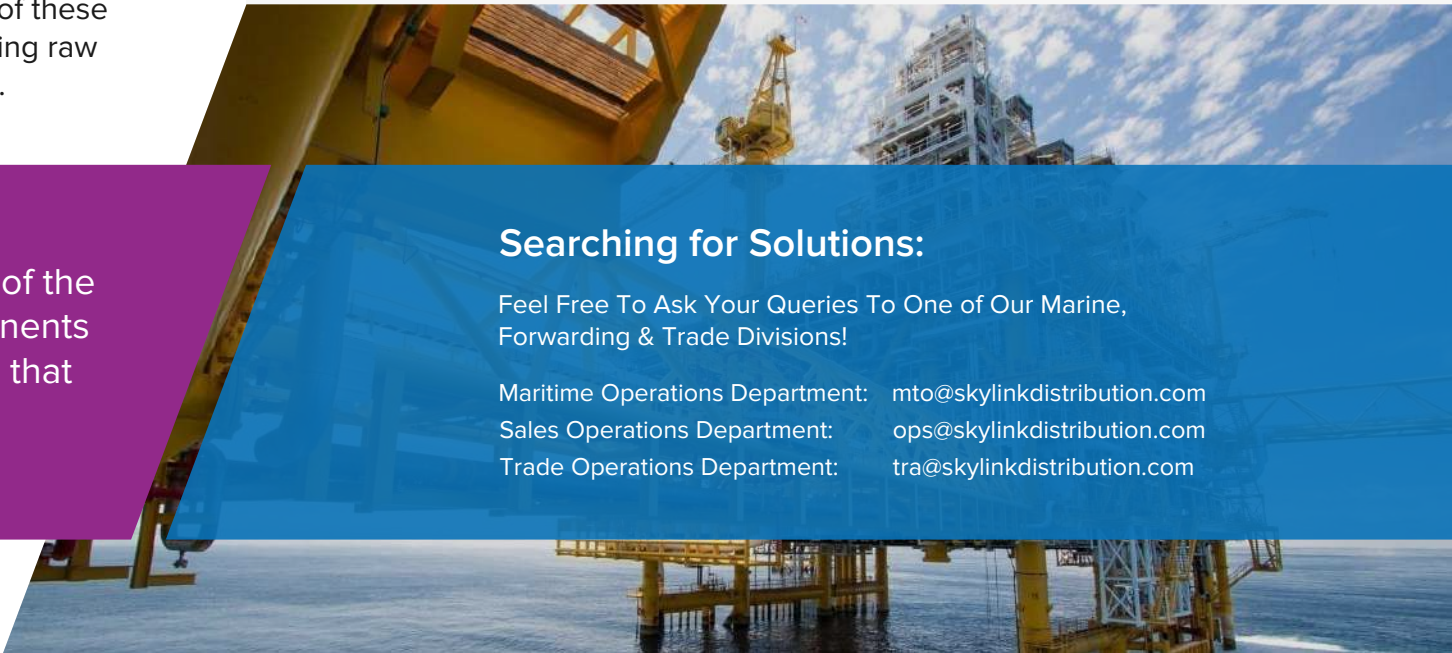
Searching for Solutions:

Feel Free To Ask Your Queries To One of Our Marine, Forwarding & Trade Divisions!

Maritime Operations Department: mto@skylinkdistribution.com

Sales Operations Department: ops@skylinkdistribution.com

Trade Operations Department: tra@skylinkdistribution.com



Specialized Services:

- Movement Of Finished Goods To Dispatch Location
- Storage / Warehousing / Yard Management
- Regulations In Export-import Of Plastic Products
- Raw Materials In The Form Of Powder, Granules, Resins Etc.
- Visibility And Reports For Each Movement Of The Shipment
- Definite Transit Schedule Towards Just In Time Delivery
- Government Regulations In Export-Import Of Plastic And Rubber Products
- Visibility And Reports For Each Movement Of The Shipment
- Export-Import Cargo Handling
- Inventory Optimization And Distribution Planning

Types of Services:

- Customs Documentation
- Direct & Transshipment Service Options
- Reverse Logistics

Searching for Solutions:

Feel Free To Ask Your Queries To One of Our Marine, Forwarding & Trade Divisions!

Maritime Operations Department: mto@skylinkdistribution.com

Sales Operations Department: ops@skylinkdistribution.com

Trade Operations Department: tra@skylinkdistribution.com

PLASTICS AND RUBBER INDUSTRY

EFFICIENTLY MOVING THE WORLD WITH PLASTIC AND RUBBER

Plastic & rubber goods are at the very center of most modern global supply chains. There are a number of difficulties in the plastic and rubber distribution supply chain as every business utilizes plastic. There are several factors to take into account while designing the plastic distribution supply chain, such as transportation, transparency, and sustainability.

Skylink network is very familiar with transporting plastic freight; we offer the capacity to ensure your freight will be moved at a fair cost and the quality to ensure it will arrive on time. We also use only the best carriers so you can ensure that your product will be handled well and shipped in a clean trailer with no contamination.

Skylink network helps to manage your logistics goals so that you stay focused on manufacturing and distributing your plastic and rubber products in response to rapidly changing market conditions in today's world.

RECYCLABLE INDUSTRY

REVITALIZING RESOURCES FOR A SUSTAINABLE FUTURE

The recycle industry is an industry where logistic efficiency is a key element because every year tons of reusable materials are wasted in logistics activities. Moreover, most recyclables are sold in big volumes so the logistics costs can stack up fast. There are a lot of facets where that efficiency can be gained, just like in the loading process, pre-carriage, or the ocean freight. There are a lot of rules and regulations that need to be followed in recycling procedures.

Skylink network acts as a control tower, monitoring & coordinating the global management of our clients' waste, which includes administrative follow-up to guarantee optimized recycling for various industries. Through this process the waste is collected and then prepared for export from different regions of the world to their desired destinations. Our logistics experts have built trust with our clients and handle each client's independent requirements for recycle management.

Specialized Services:

- Environmental – Friendly Transport Of Recyclables
- Assets Management
- Complete Visibility Throughout Logistics Process
- End To End Management Of Recyclables Transportation
- Management Of Equipment For Transportation
- Flexibility And Transparency Of Logistic Solutions
- Documentation Of Regulatory Compliance
- Sustainable Recycling Transportation Solutions
- Optimize Efficiencies And Costs By Maximizing Loads Per Route
- Safe Loading And Unloading

Types of Services:

- Reverse Logistics
- Custom Clearance
- Vendor Management

Searching for Solutions:

Feel Free To Ask Your Queries To One of Our Marine, Forwarding & Trade Divisions!

Maritime Operations Department: mto@skylinkdistribution.com
Sales Operations Department: ops@skylinkdistribution.com
Trade Operations Department: tra@skylinkdistribution.com

Specialized Services:

- Climate controlled warehouses
- Logistics management
- Distribution
- Specialized Fleet/ Load Units
- Expedited, Sample And High-Volume Shipment Capabilities
- Cost Effective Logistics Solutions
- End-To-End visibility
- Reverse Logistics
- Packaging Solutions
- Route Survey

Types of Services:

- Inventory Management
- Documentation & Compliance Support
- Contract Management

Searching for Solutions:

Feel Free To Ask Your Queries To One of Our Marine, Forwarding & Trade Divisions!

Maritime Operations Department: mto@skylinkdistribution.com

Sales Operations Department: ops@skylinkdistribution.com

Trade Operations Department: tra@skylinkdistribution.com

WIRE AND CABLE MANUFACTURING INDUSTRY

POWERING LOGISTICS:

Roll it up, we'll take it

The delicate nature of cables and wires makes them sensitive to damage during transportation which demand careful packaging and secure transport methods. Global supply chains in this industry involve complex networks, leading to potential delays due to customs clearance, regulatory compliance, and varying standards across different regions. These all challenges possess advance planning and management.

Skylink, With an extensive partner carrier network and access to a variety of equipment types, providing transportation solutions to the wire and cable industry. Whether you need complete freight management or a dedicated logistics partners, Our tailor made logistics services equipped to manage every aspect of your transportation needs.

Skylink knows how to store, prepare, and ship your high-quality precision cable safely and efficiently. we offer custom services including striping, dyeing, and bundling your cable spools in preparation for fulfillment and distribution.

SPORTS GOODS INDUSTRY

GAME-READY LOGISTICS: Moving Sports Goods

At present, Pakistan's sports goods enjoying world-wide recognition mainly because of the care that goes into their designing, manufacturing and selecting the finest raw materials. The basic raw materials required for the production of sports goods, are leather, wood, glue, nylon guts, rubber and chemicals. Shipping sports goods required inbound and outbound logistics which can possess various challenges due to its Fragile property and lead toward higher shipping cost and logistics complexity.

Every industry has unique needs and when it comes to Sport Industry you may see it's seasonal, so consumer and therefore retail demand fluctuates throughout the year. Sporting good logistics requires knowledge not only of seasonality, but the best channels for your products and how to work with those retailers and suppliers for the most efficient results.

Skylink sports goods logistics consultants will review your needs and offer strategic suggestions to improve your efficiency, whether it's the best way to store your goods for effective distribution and order fulfillment or knowing the rules of the game when it comes to mass retail compliance standards.

Specialized Services:

- Raw Material transportation
- Vendor-Supplier Relationship Management
- Warehousing
- Domestic Part-load
- Cost per setup project
- Freight Services
- Dock to Dock Shipping
- Dock to Airport Shipping
- Dock to Door via Road Cargo
- Shipping Status and Tracking Updates

Types of Services:

- Warehousing and Storage
- Documentation & Compliance Support
- Contract Rates Fillings

Searching for Solutions:

Feel Free To Ask Your Queries To One of Our Marine, Forwarding & Trade Divisions!

Maritime Operations Department: mto@skylinkdistribution.com
Sales Operations Department: ops@skylinkdistribution.com
Trade Operations Department: tra@skylinkdistribution.com

Specialized Services:

- Warehousing & Storage
- Stevedoring Services
- Extensive Fleet Of Trucks Ensuring Great Flexibility In Distribution And Projects.
- Warehousing, Transshipment, Picking & Distribution
- Supply Security Thanks To Inter-Plant Transport
- Vendor Management
- Government Regulations In Export-Import Of Technological Products
- Direct & Transshipment Service Options
- Maintain Real-Time Visibility Of Your Shipments
- Safe Transportation Of Everything From Small Components To Heavy-Duty Oversized Technology Machinery

Types of Services:

- Distribution With Shared Networks
- Seamless Customer Services Support
- Reverse Logistics (Return Logistics)

Searching for Solutions:

Feel Free To Ask Your Queries To One of Our Marine, Forwarding & Trade Divisions!

Maritime Operations Department: mto@skylinkdistribution.com
Sales Operations Department: ops@skylinkdistribution.com
Trade Operations Department: tra@skylinkdistribution.com



TECHNOLOGY INDUSTRY

The technology industry is one of the most critical to the world economy, and it is also among the most logistics-intensive. The technology industry's global scope and competitive landscape means you must be able to get your products to market as quickly as possible.

Skylink network provides comprehensive support for any business in which the logistics management & transportation of technology products is paramount. We offer end-to-end services from which you can choose individually, or select several for integration into a complete technology logistics solution.

Skylink network have developed an extensive range of specialized services for technology supply chains, available to your organization or enterprise then and there. On land, at sea, and in the air, your technology—along with our people and partners—will keep your technology moving.

TIMBER INDUSTRY

FROM FOREST TO FOUNDATION: Delivering Timber Excellence

Timber products often have to cover huge distances from the point of origin to the place for further processing & then to final destination. Narrow roads to inaccessible harvesting sites pose a hurdle to plan transportation and utilization of equipment efficiently; moreover, as timber wood is perishable so moisture with heat and insect attacks may damage the fibers in the wood during long transits. Supply chain needs for transporting timber products to key markets requires comprehensive planning, short lead times, stock optimization, special cargo handling, and professional care.

Timber products covers logistics services related to wood as a raw material. These include trading, storage and processing of by-products from sawmills such as sawdust or woodchips, raw wood, sawn timber, chipboard, pellets, waste wood & timber construction components and industrial wood directly from the forest. Skylink network specializes in timber products – in addition to cargo transportation itself, we have shipping and order management systems to support your product delivery. Timber products industry manufacture a vast range of semi-produced and finished products that are all dependent on innovative, cost-effective supply chain solutions.

Skylink network has been facilitating timber industry access to key global markets and pioneering containerized packing and devanning techniques and have developed a strong reputation for reliability and quality services – ensuring seamless pickup and delivery at the best available price.

Specialized Services:

- Interim Storage in Warehouses
- 3PL Solutions Including Vessels, Trains, Trailers, Terminals and Containers
- A Modern Fleet of Vessels
- A Wide Range of Value-Added Services
- Quick and accurate measurement of the load
- Rail and Road Distribution Services
- Innovations in log truck/trailer design
- Solutions For Any Business Scope or Size
- Intermodal Transport from Shipper to Consignee
- Innovative Systems to Integrate Planning, Operations, Harvesting, Transport & Sales

Types of Services:

- Returns processing
- Customs Clearance
- Product-related document handling

Searching for Solutions:

Feel Free To Ask Your Queries To One of Our Marine, Forwarding & Trade Divisions!

Maritime Operations Department: mto@skylinkdistribution.com
Sales Operations Department: ops@skylinkdistribution.com
Trade Operations Department: tra@skylinkdistribution.com

Specialized Services:

- E-commerce And Omnichannel Fulfilment
- Last-mile Deliveries And Return Solutions
- End-to-end Virtual Integration And Tracking System Down To Parcel Level
- Regionalized Inventory To Reduce Cost
- Rapid E-commerce Deployment
- Inventory Management
- Warehousing And Storage
- Reverse Logistics
- 3-PL Logistics
- Drop Shipping

Types of Services:

- End-to-end It Solutions
- Last Mile Management
- E-commerce Fulfilment

Searching for Solutions:

Feel Free To Ask Your Queries To One of Our Marine, Forwarding & Trade Divisions!

Maritime Operations Department: mto@skylinkdistribution.com

Sales Operations Department: ops@skylinkdistribution.com

Trade Operations Department: tra@skylinkdistribution.com

E-COMMERCE SOLUTIONS

DELIVERING CONVENIENCE, ONE PACKAGE AT A TIME

Ecommerce logistics is defined as the supply chain of a company's online customer orders being fulfilled. It is the process of getting a product from the point of manufacturing to the point at which it is delivered to consumers. Ecommerce companies employ ecommerce logistics, also known as e-logistics, to get an order out the door and into the hands of the client. The order is packed, shipped, delivered, and in certain circumstances refunded after online customers make a purchase.

You need a seasoned and dependable partner that can build solutions rapidly and implement them swiftly if you want to grow your eCommerce business or quickly adjust to a changing industry. Your end clients will be satisfied thanks to Skylink, your eCommerce partner. No matter how much your online business extends geographically, scales up and down based on demand, or grows and shrinks according to the seasons.

We provide full end-to-end eCommerce service capabilities, ranging from inbound supplier management and warehouse fulfillment to shipping and customs services to last mile and reverse logistics.

Skylink network's eCommerce Solutions offers choice, convenience, control and quality for both the merchant and the consumer. Our global team of e-commerce experts is dedicated to providing innovative solutions that create a great online shopping experience.

Specialized Services:

- Import & Export Management
- Freight Management Services
- Tariff Classification
- Banking Compliance
- Customs Duty Management
- Brokerage Services
- Transport Management
- Vendor Management
- Distribution Services
- Specific Warehousing

Types of Services:

- Safe Transportation From Small Components To Heavy-duty Oversized Machinery
- Just-in-time And Just-in-sequence Supply
- Reverse Logistics For Maintenance, Repairs Or Recycling

Searching for Solutions:

Feel Free To Ask Your Queries To One of Our Marine, Forwarding & Trade Divisions!

Maritime Operations Department: mto@skylinkdistribution.com

Sales Operations Department: ops@skylinkdistribution.com

Trade Operations Department: tra@skylinkdistribution.com

INDUSTRIAL ENGINEERING

OPTIMIZING INDUSTRIAL ENGINEERING OPERATIONS

Combat the tight timelines of the industrial sector with powerful technology and skilled experts for every shipment—from raw materials to finished goods. When you know the status of every shipment, you have time to make decisions that avoid disruptions, minimize delays, or prevent unnecessary costs.

Skylink network offers industry-specific solutions to a diverse range of industrial sectors – our industrial logistics solutions give you the right balance between quality, cost, flexibility and standardization. This lets you meet the challenges you face in a dynamic market that is often underpinned by regulatory demands.

Skylink network provides support for the full orchestration of all transport solutions along your entire value chain. You can achieve global governance of your projects while continuously improving your operational handling, system integration and process management. We coordinate shipments from different suppliers in multiple countries & arrange transport to recipients around the world – including quality control and individual packaging.

Specialized Services:

- Logistics Planning & consultation
- Global Freight Transportation
- Route Surveys
- On-Site Support
- Equipment Logistics
- Storage & warehousing (open & close storage areas)
- Vehicles for special transportation.
- Specialized chartering team
- Waste management
- Reverse Logistics

Types of Services:

- Custom Clearance
- Global Trade Compliance
- Documentation

Searching for Solutions:

Feel Free To Ask Your Queries To One of Our Marine, Forwarding & Trade Divisions!

Maritime Operations Department: mto@skylinkdistribution.com
Sales Operations Department: ops@skylinkdistribution.com
Trade Operations Department: tra@skylinkdistribution.com

CONSTRUCTION INDUSTRY

CONSTRUCTION LOGISTICS: Heavy Loads, Strategic Solutions

Construction sites require heavy-duty and valuable equipment and materials that must be delivered on schedule. The absence of a logistics plan and tracking for your freight to your construction sites can lead to several problems. Coordination is essential to manage a construction project. And logistics can be part of the success when supplying the building materials needed in good time.

Skylink has adapted and followed suit to keep up with it. Logistics in construction management is about planning, executing, and controlling procurement, transportation, workers, and resources. With our partnered network we can provide companies with transport-related services, warehousing and temporary staffing. Our vision is to become the most sought-after logistics partner in the construction sector.

Skylink now offers range of services to construction companies, our best practices, decades of expertise and modern technology makes our daily operations more efficient. Through our integrated digital system that covers the entire supply chain, construction sites can conveniently take care of, for example, inventory control, acknowledgements, timestamps and job booking as well as order additional services as needed.